

Eternal Flame

The Bangles

$Bm^7 = Bm$

Tonart G

$Am^7 = Am$

$Dm^7 = Dm$

1. Strophe:

G **Em** **C** **D**
Close your eyes, give me your hand, darling

G **Em** **C**
Do you feel my heart beating

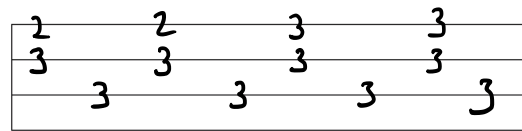
D **Em**
Do you understand

B7 **Em**
Do you feel the same

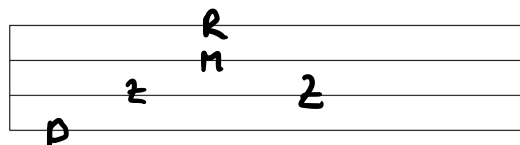
A7 **D** **Bm7**
Am I only dreaming

Am7
Is this burning an eternal flame

Intro



Zupfmuster



2. Strophe:

G **Em** **C** **D**
I believe it's meant to be, darling

G **Em** **C**
I watch you when you are sleeping

D **Em**
You belong with me

B7 **Em**
Do you feel the same

A7 **D** **Bm7**
Am I only dreaming

Am7
Or is this burning an eternal flame

